

What is

Climate Credit?

**Forest
management
Climate change**

**Another step towards
multifunctional forest
management**

Aimed at

**Companies and
organisations**



Life CLIMARK



**Climate
Credit**

More than just carbon

**Multifunctional
and
climate-smart
forest management**

What is climate credit?

Forest management and climate change

Forest management contributes to **MITIGATING climate change**, and not only by planting trees! If done in a planned way, extracting trees from dense forests can enhance the growth of other trees, reducing the risk of forest fires and generating renewable raw materials to replace fossil fuels and materials. By means of forest management, the carbon sink function of Catalan forests, which currently absorb 10% of total CO₂ emissions, could be increased by 20%.

Moreover, forest management makes it possible to **ADAPT forests to new climate scenarios** by generating forests that are more able to resist and withstand longer periods of drought and more frequent and more intense disruptions, such as forest fires, wind or diseases. Furthermore, forest management influences forest water cycles and can help mitigate the impact of climate change on this vital resource.

At Life CLIMARK we are developing a new tool to facilitate social responsibility, corporate image, environmental enhancement and offsetting initiatives related to the climate crisis and the impact on Catalan forests

Climate credit is a new medium of exchange designed to facilitate investment in nature-based solutions in Catalonia, as part of voluntary offsetting and corporate social responsibility initiatives. For those who manage woodlands, it is a way to diversify income for management work based on highlighting the benefits they provide for society. For companies, the Climate Credit seal is a secure and controlled way of managing contributions, while also offering visibility and transparency.

Climate credit is based on an integrated approach to forest management: for forestry activity to generate climate credits, it must have a positive impact on climate change mitigation and adaptation, and it must do so in a way that corresponds with the local context in which it is applied.

It is calculated based on an evaluation of the impact of forest management on the:

- **Ability to absorb and/or conserve carbon stocks (in woodlands and in products)**
- **Water use of forests**
- **Conservation and enhancement of biodiversity**
- **Resistance and resilience to fires**

Corporate image

Reputation and recognition

Environmental enhancement

Economic contribution to
improving the local environment

CSR

Corporate social responsibility



**Climate
Credit**

How will the **climate credit market** work?

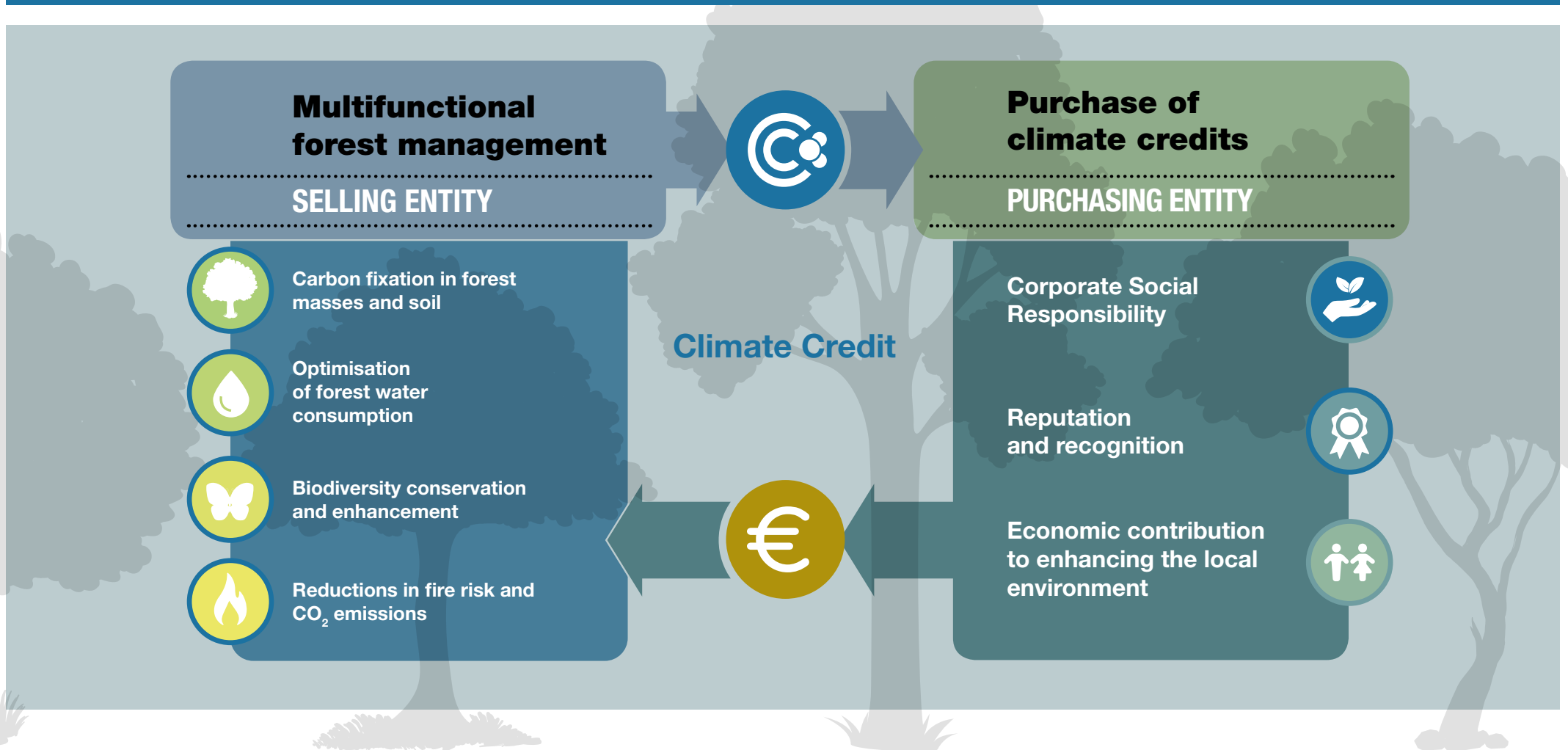
Funding is key to moving any project forward.

Life CLIMARK proposes that **multifunctional management projects in Catalonia** are funded by means of the climate credit market.

The system fundamentally centres on companies purchasing climate credit, which is then used to fund all or part of a forest project.

By purchasing credit from the climate credit market, companies and organisations can provide extra

funding, which is essential for smart and sustainable forest management measures to be implemented, while also serving as a vehicle for their joint responsibility for the conservation of forests and the services they offer society.



What climate credit can offer you?

Climate credit enables you to:

- **Comprehensively manage the impact your company or organisation has**, taking into account not only CO₂ emissions but also water consumption and/or its impact on biodiversity.
- Exercise your joint responsibility for sustainable development and the natural environment **in the area in which you operate**, generating good quality employment.
- Contribute to improvements related to **climate change mitigation and adaptation**, including forest fire prevention and the conservation of woodlands and their biodiversity, and, ultimately, **the protection of a living landscape and region**.
- Invest in reliable CSR, characterised by transparency and visibility, by means of the Climate Credit brand.

“Comprehensively manage the impact your company or organisation has in the area in which you operate”

Carbon

Carbon fixation in forest tracts and soil

Water

Optimisation of forest water consumption

Biodiversity

Biodiversity conservation

Forest fires

Reductions in the risk of fire, its impact and carbon emissions

Who can participate in the climate credit market?

- **Multinational companies**
- **Local companies linked to a given region**
- **Other public and private entities**

When purchasing climate credits, effectiveness and transparency will be guaranteed thanks to independent third-party certification.

Depending on the needs of the purchasing entity, complementary dissemination services may be accessed, allowing the credits purchased according to your company values to be made visible to employees, customers and/or the beneficiary region.

By committing to multifunctional management of Catalan forests, you are contributing to the fulfilment of six of the **Sustainable Development Goals of the United Nations**

- **Climate action**
- **Life on land**
- **Clean water and sanitation**
- **Affordable and clean energy**
- **Decent work and economic growth**
- **Industry, innovation and infrastructure**



Climate Credit

Promotion of forest management for
climate change mitigation through the
design of a local **climate credit** market

The initiative is part of the Life CLIMARK project



Life CLIMARK

More than just carbon

Coordinator:

The Forest Ownership Centre

Partners:

National Research Council (Italy) - Institute for Agricultural
and Forest Systems in the Mediterranean
Forest Science and Technology Centre of Catalonia
Catalan Office of the Climatic Change
University of Lleida

See full information at:

lifeclimark.eu



[@lifeclimark](https://twitter.com/lifeclimark)

[#GoLIFEClimark](https://twitter.com/GoLIFEClimark)



facebook.com/lifeclimark/

 Generalitat de Catalunya
Departament d'Agricultura,
Ramaderia, Pesca i Alimentació



Centre de la Propietat
Forestal

CTFC 

 Consiglio
Nazionale delle
Ricerche

 Generalitat de Catalunya
Departament de Territori
i Sostenibilitat

 Oficina Catalana
del Canvi Climàtic

 Universitat de Lleida
Escola Tècnica Superior
d'Enginyeria Agrària